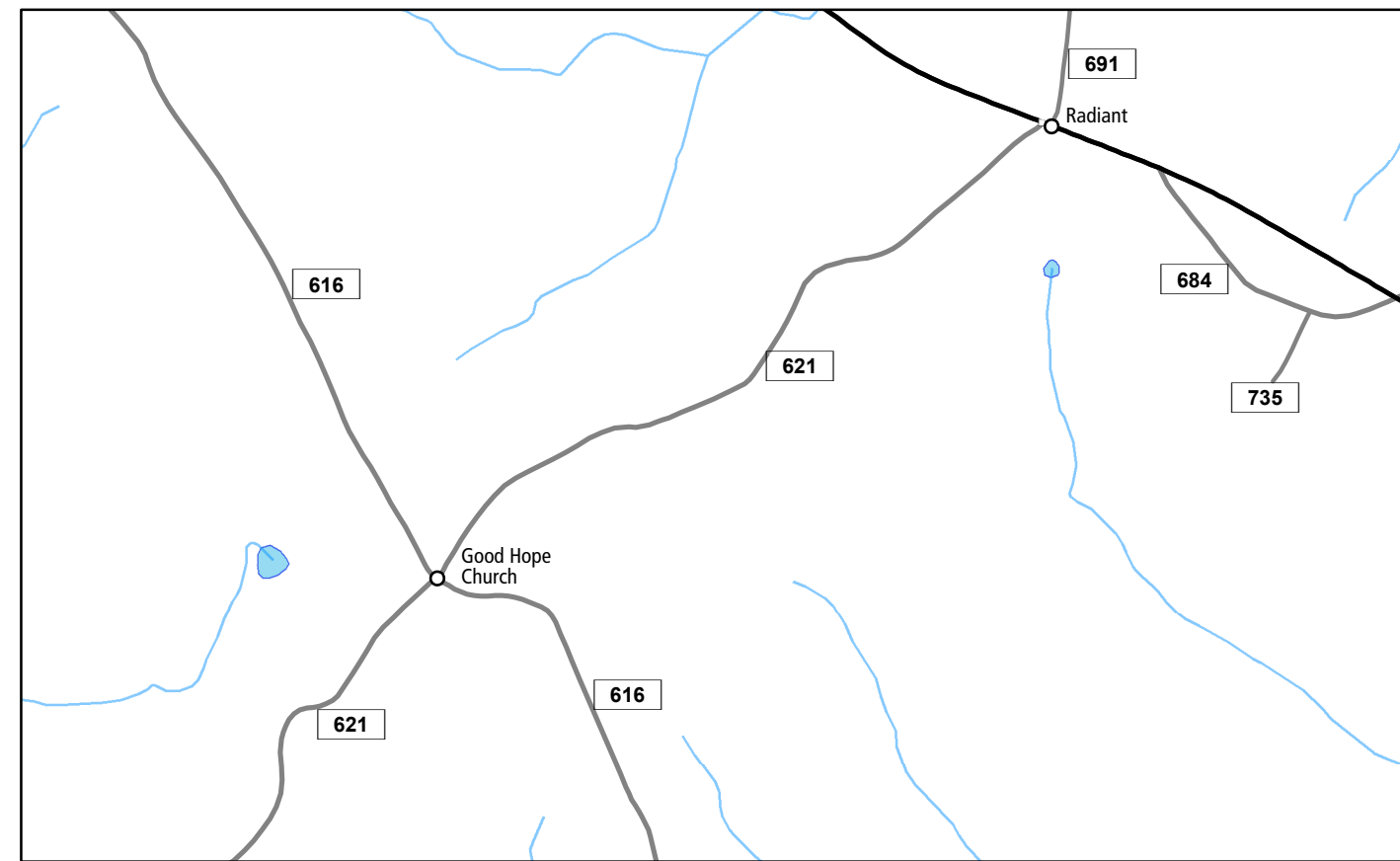
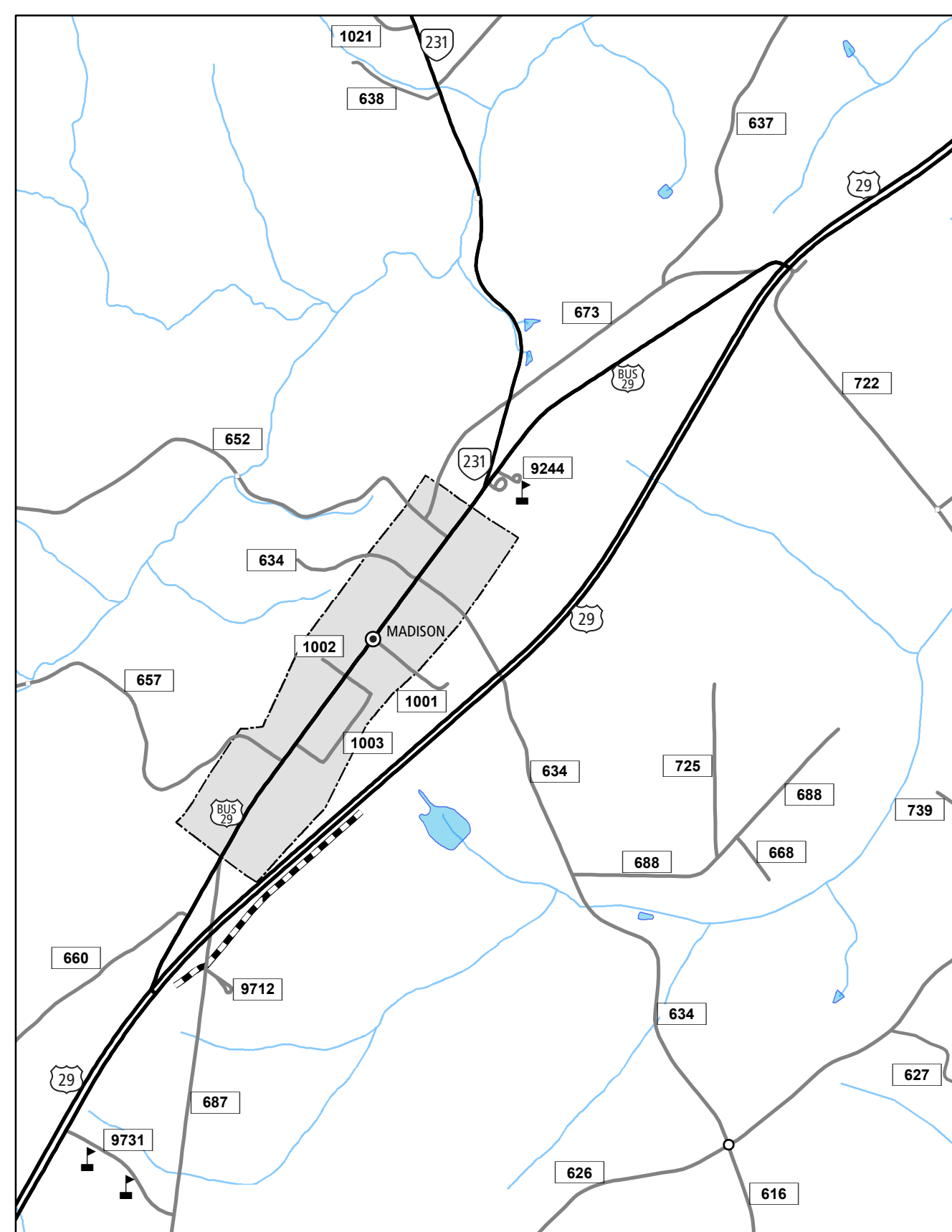


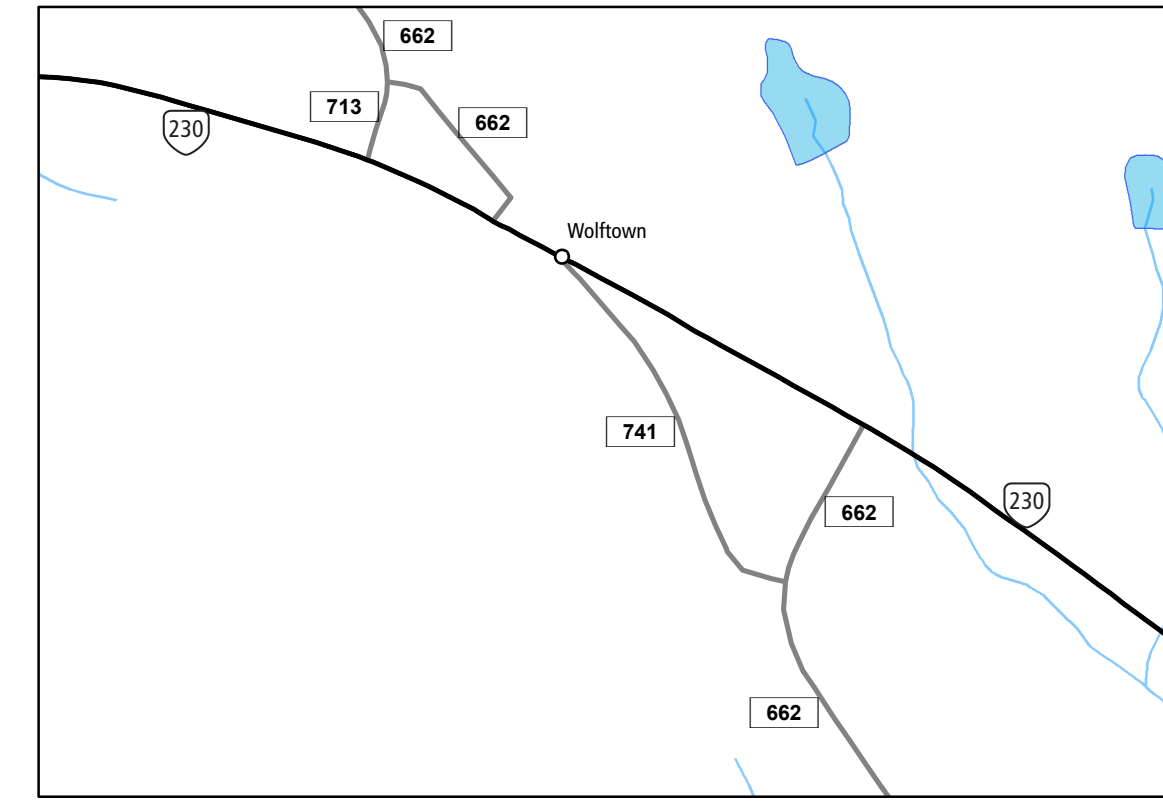
1  
BRIGHTWOOD AREA  
(four times map scale)



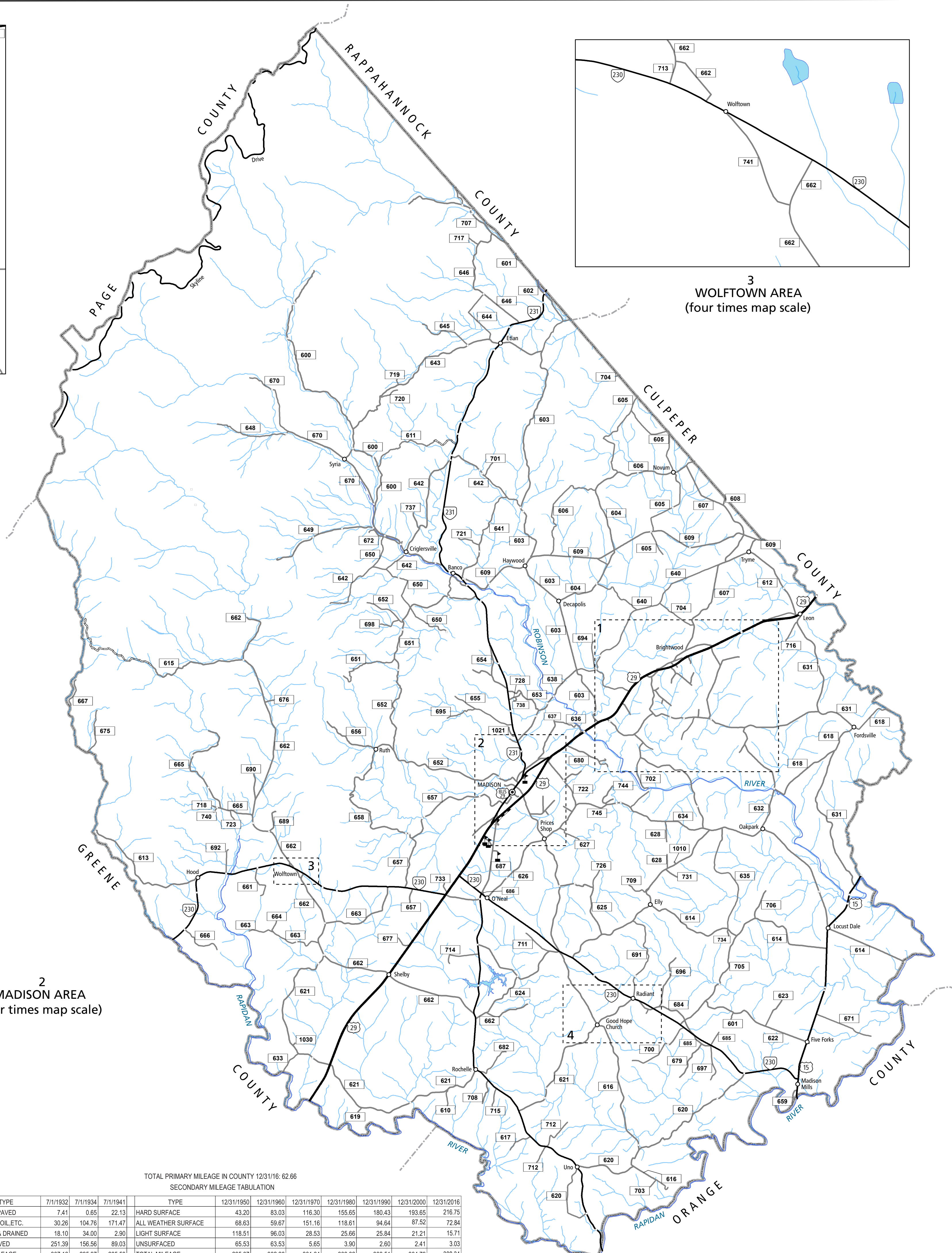
4  
GOOD HOPE CHURCH AREA  
(four times map scale)



2  
MADISON AREA  
(four times map scale)



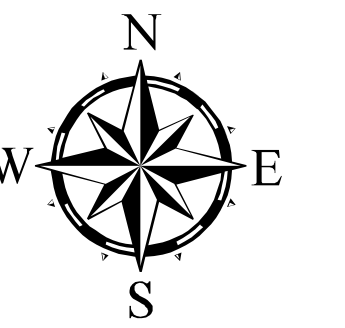
3  
WOLFTOWN AREA  
(four times map scale)



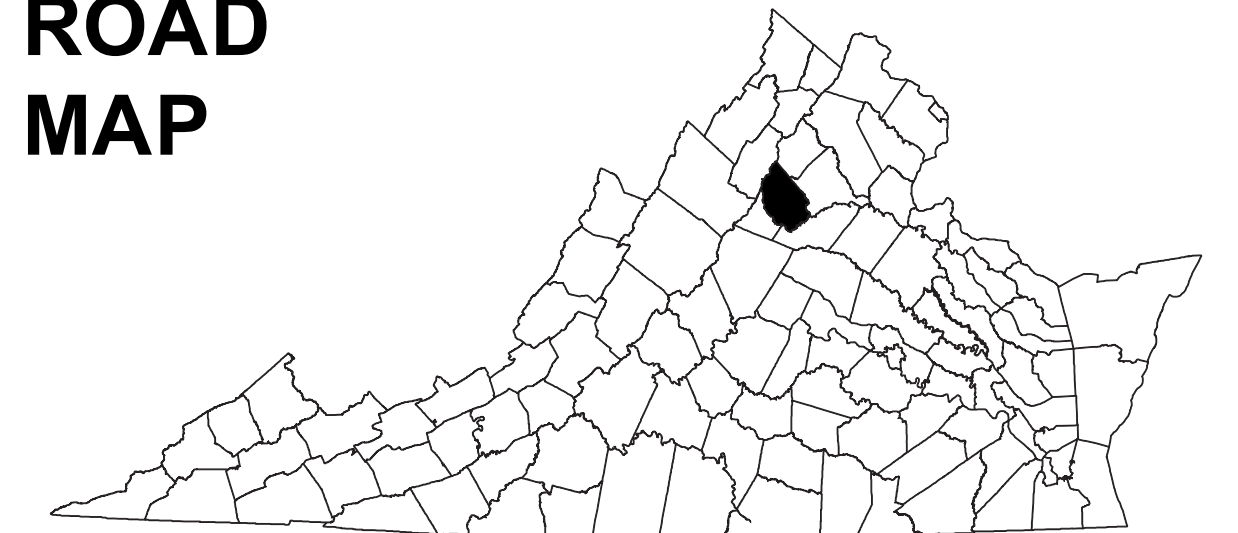
TOTAL PRIMARY MILEAGE IN COUNTY 12/31/16: 62.66  
SECONDARY MILEAGE TABULATION

TYPE	7/1/1932	7/1/1934	7/1/1941	TYPE	12/31/1950	12/31/1960	12/31/1970	12/31/1980	12/31/1990	12/31/2000	12/31/2016
BIT_SUR_PAVED	7.41	0.65	22.13	HARD SURFACE	43.20	83.03	116.30	155.65	180.43	193.65	216.75
GRAVEL_SOIL.ETC.	30.26	104.76	171.47	ALL WEATHER SURFACE	68.63	59.67	151.16	118.61	94.64	87.52	72.84
GRADED & DRAINED	18.10	34.00	2.90	LIGHT SURFACE	118.51	96.03	28.53	25.66	25.84	21.21	15.71
UNIMPROVED	251.39	156.56	89.03	UNSURFACED	65.53	63.53	5.65	3.90	2.60	2.41	3.03
TOTAL MILEAGE	307.16	295.97	285.53	TOTAL MILEAGE	295.87	302.26	301.64	303.82	303.51	304.79	308.34

MADISON COUNTY, VA



COUNTY  
ROAD  
MAP



MADISON  
COUNTY

ROAD CLASSIFICATIONS

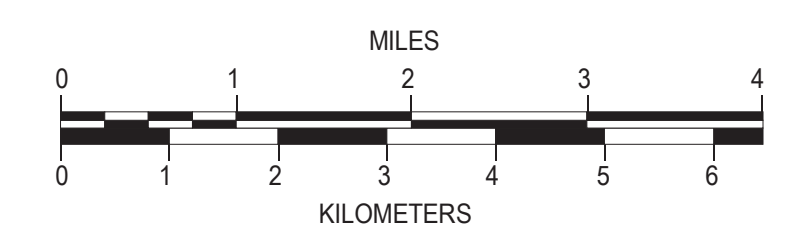
- Frontage Road
- Secondary Route
- State Route
- U.S. Route
- Urban Road
- LightSurface
- DividedHwyInterstate
- AllWeatherSurface
- Unsurfaced
- otherSurface
- BikeRoutes
- AppalachianTrail

MISCELLANEOUS

- Schools
- Seaports
- Park\_RideLots
- AIRPORTS**
- Commercial
- General
- Military
- RAILROADS**
- Metro
- VARailroads

BOUNDARIES

- MilitaryAreas
- MagisterialDistricts
- Incorp\_Areas
- Natural\_LandCover



The accuracy or completeness of this map is not guaranteed or warranted.  
Map depicts state-maintained highway network as of May 1, 2017.  
Copyright © 2017 by Commonwealth of Virginia  
Department of Transportation, All Rights Reserved

AN INVENTORY OF STATE MAINTAINED ROADS