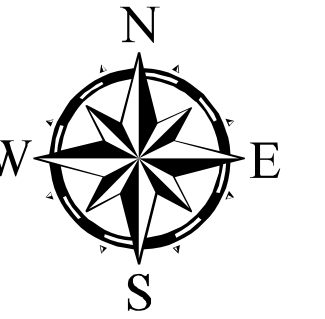
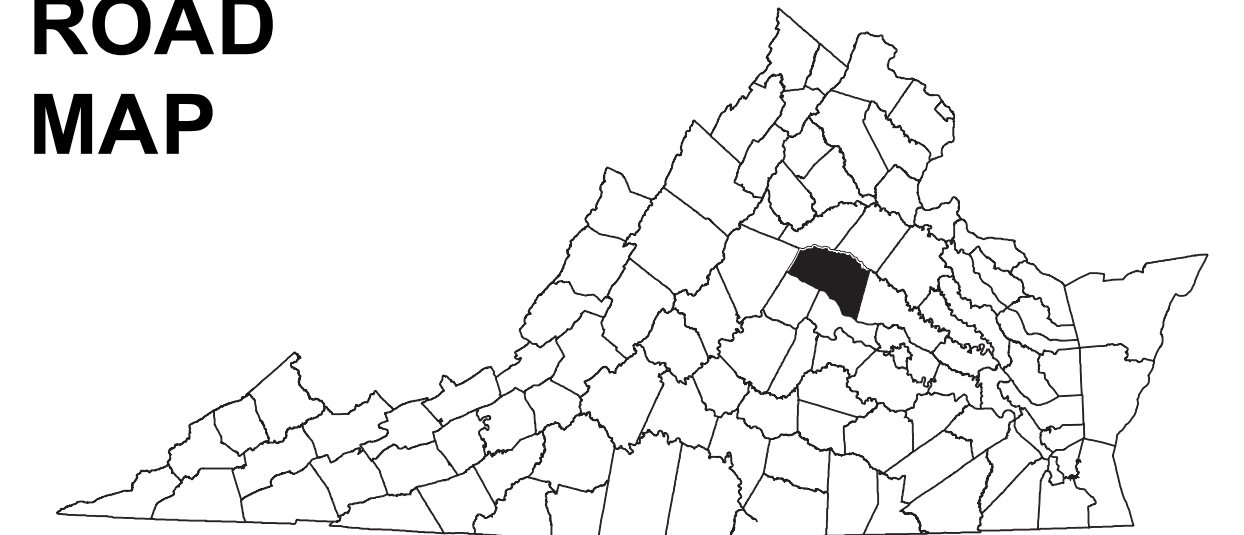


LOUISA COUNTY, VA



COUNTY ROAD MAP

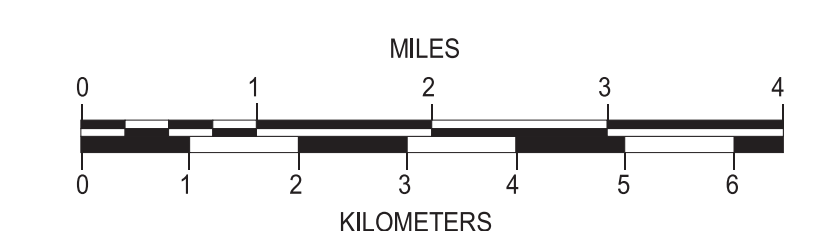


LOUISA COUNTY

ROAD CLASSIFICATIONS MISCELLANEOUS

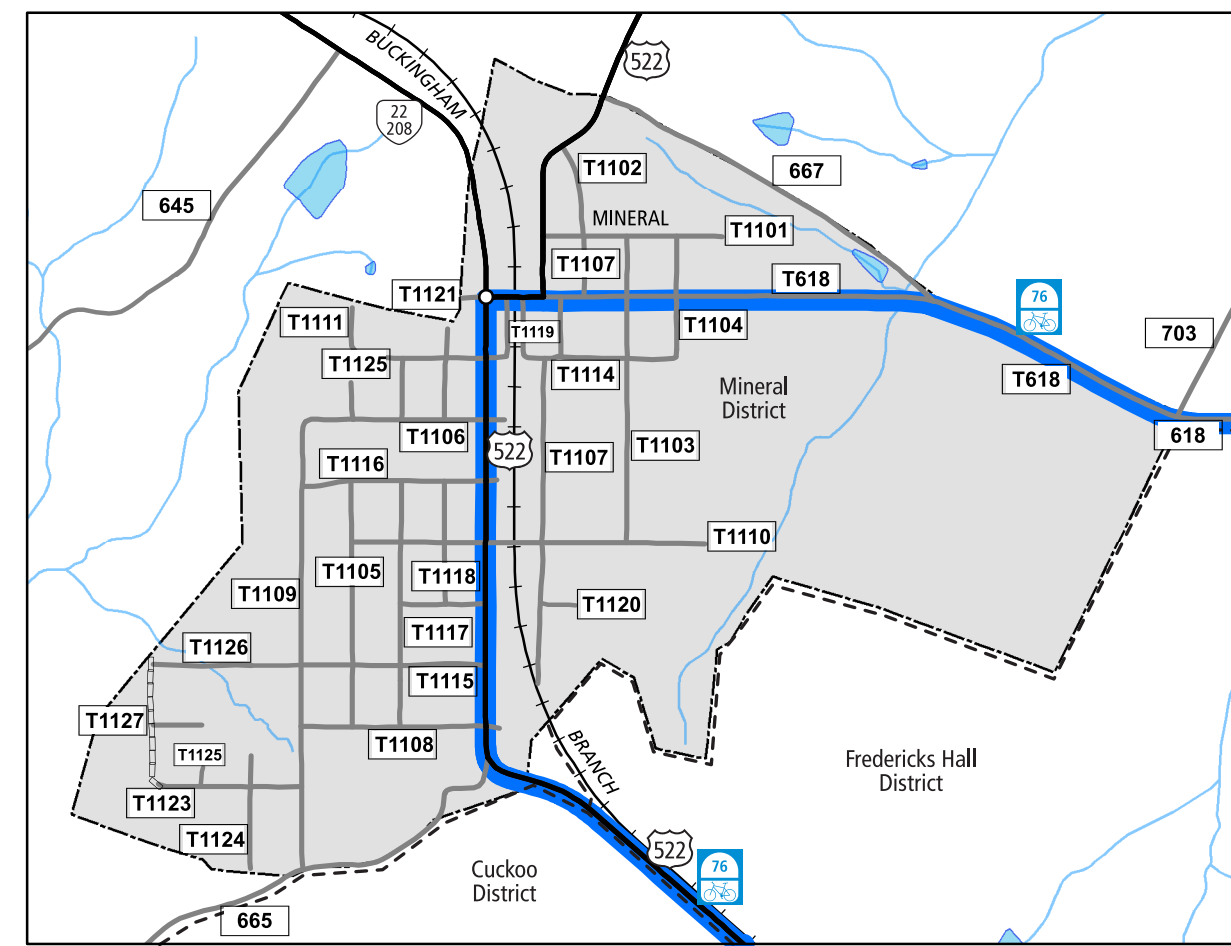
- Frontage Road
- Secondary Route
- State Route
- U.S. Route
- Urban Road
- LightSurface
- DividedHwyInterstate
- AllWeatherSurface
- Unsurfaced
- otherSurface
- BikeRoutes
- AppalachianTrail
- Scenic Roads
- Hard-surface
- Schools
- Seaports
- Park_RideLots
- AIRPORTS
- Commercial
- General
- Military
- RAILROADS
- Metro
- VARailroads
- Park_N_Ride
- BOUNDARIES
- MilitaryAreas
- MagisterialDistricts
- Incorp_Areas
- Natural_LandCover

Additional ROAD CLASSIFICATION (Post 2019)
Hard-surface

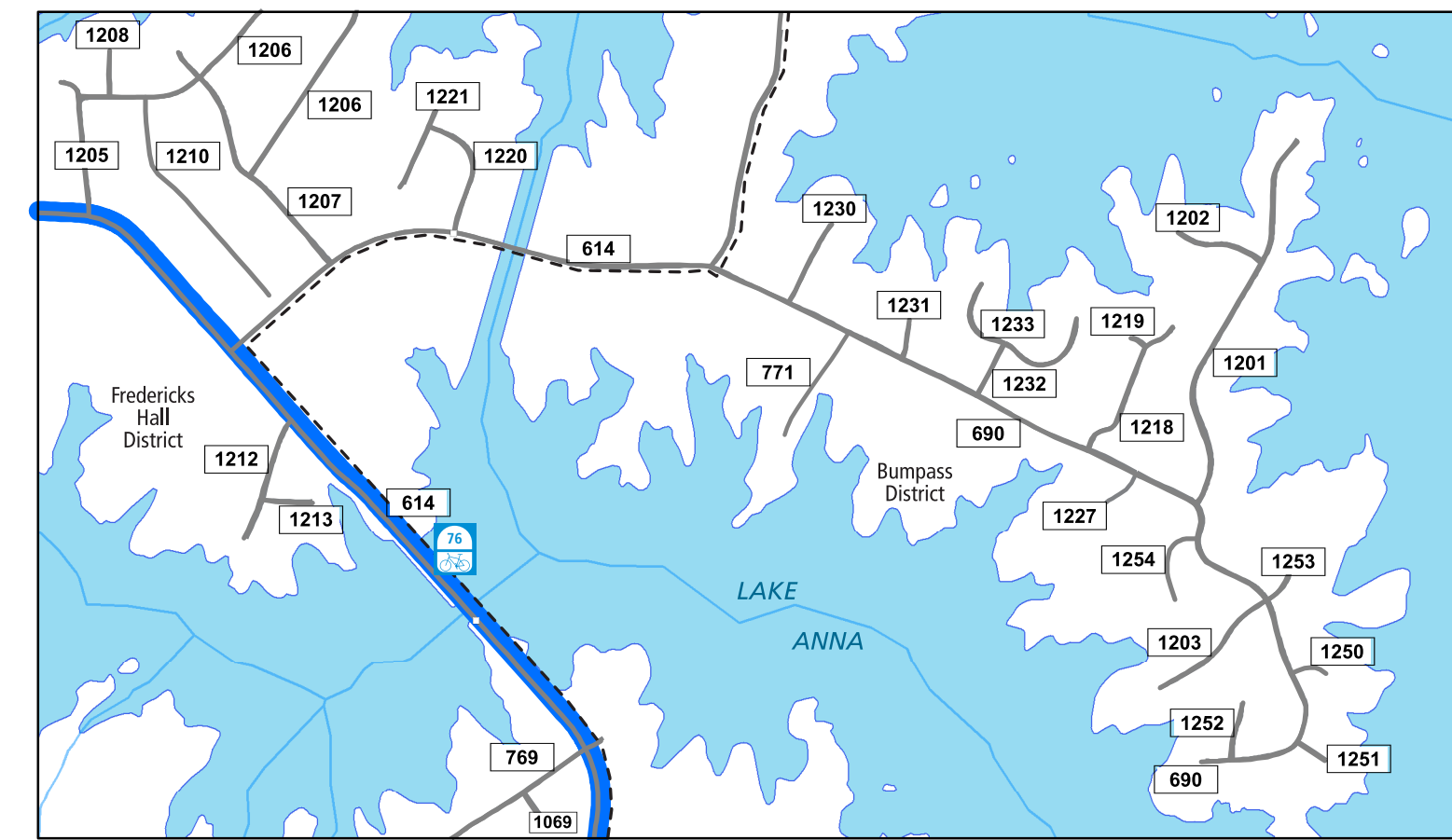


The accuracy or completeness of this map is not guaranteed or warranted. Map depicts state-maintained highway network as of May 1, 2021. Copyright © 2021 by Commonwealth of Virginia Department of Transportation. All Rights Reserved

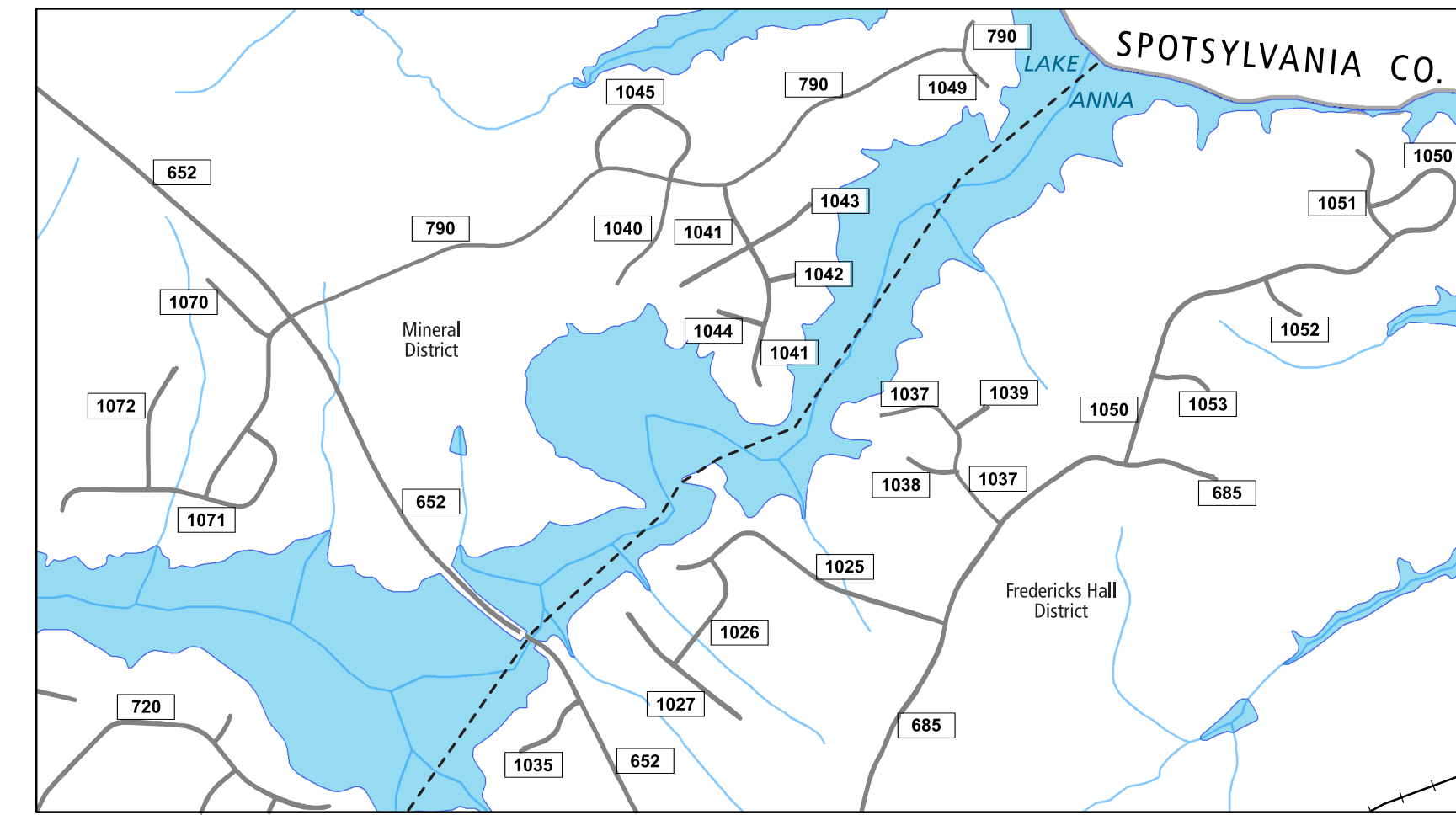
AN INVENTORY OF STATE MAINTAINED ROADS



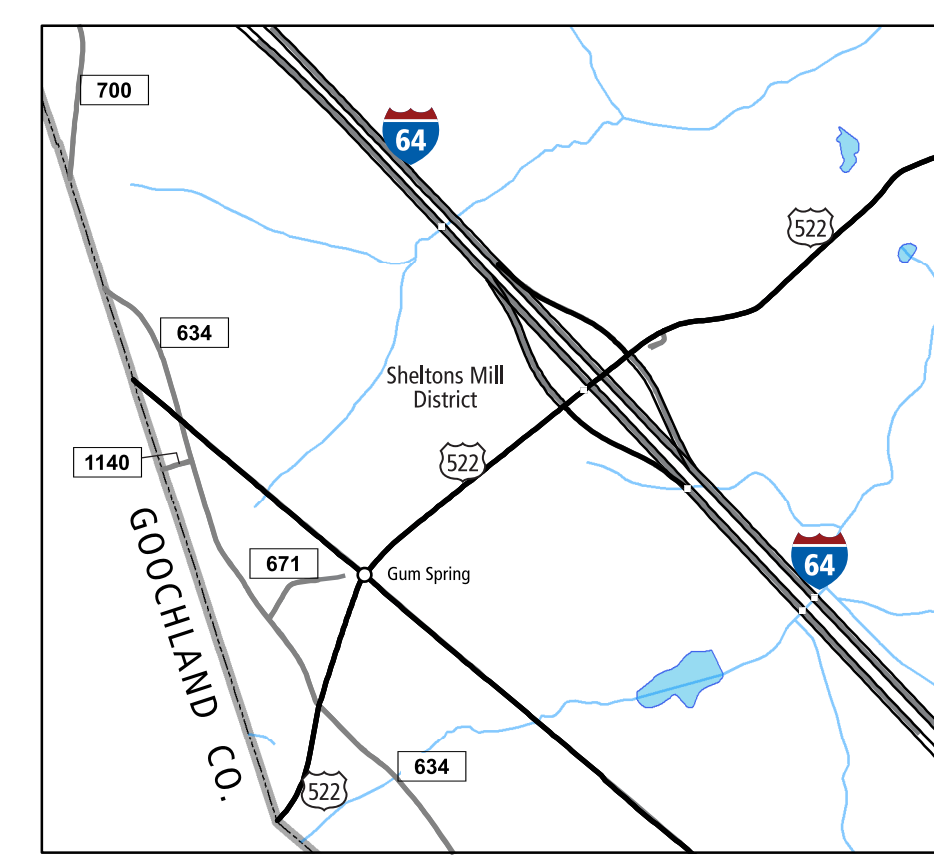
1 MINERAL AREA (four times map scale)



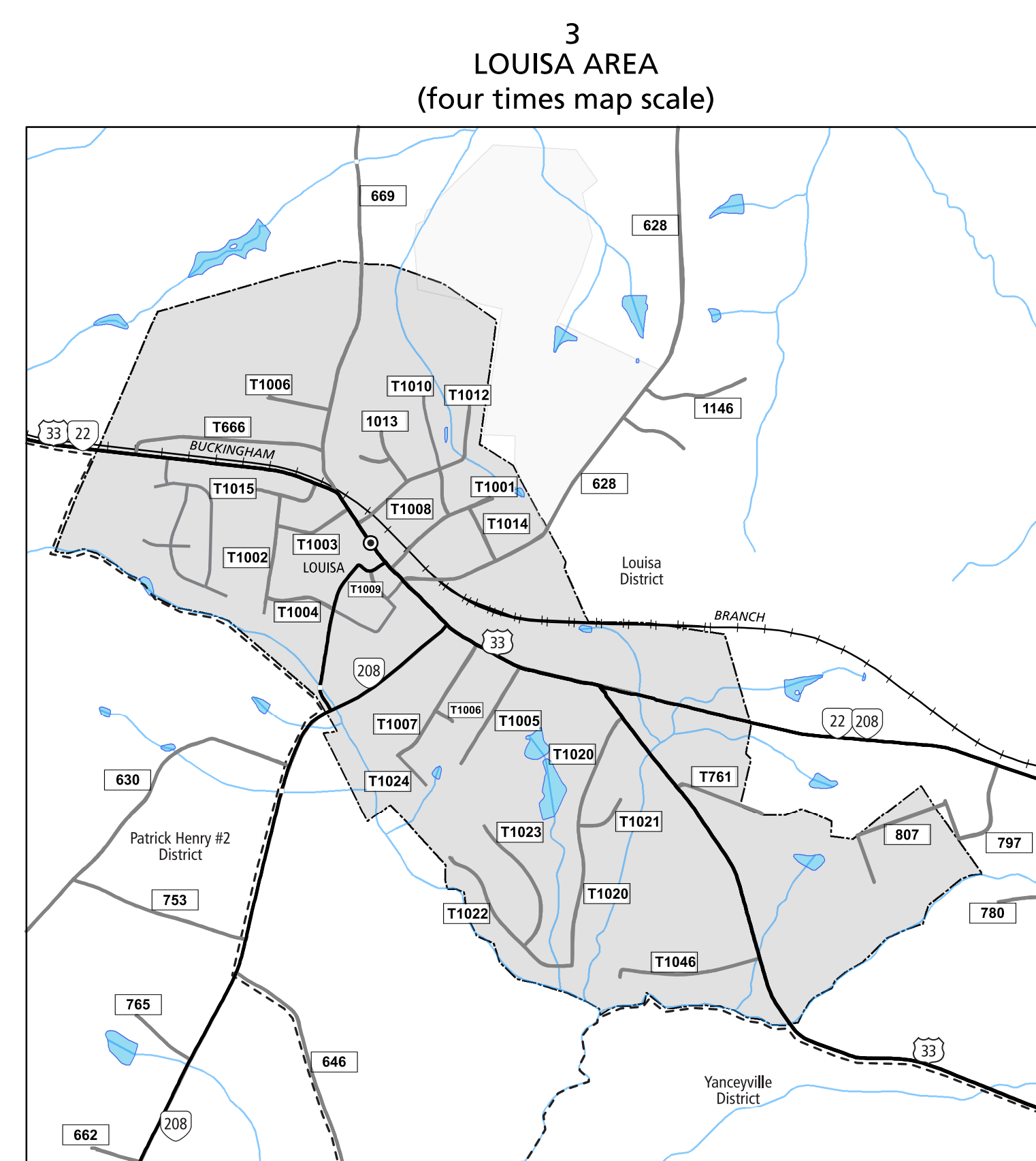
4 CENTRAL LAKE ANNA AREA (four times map scale)



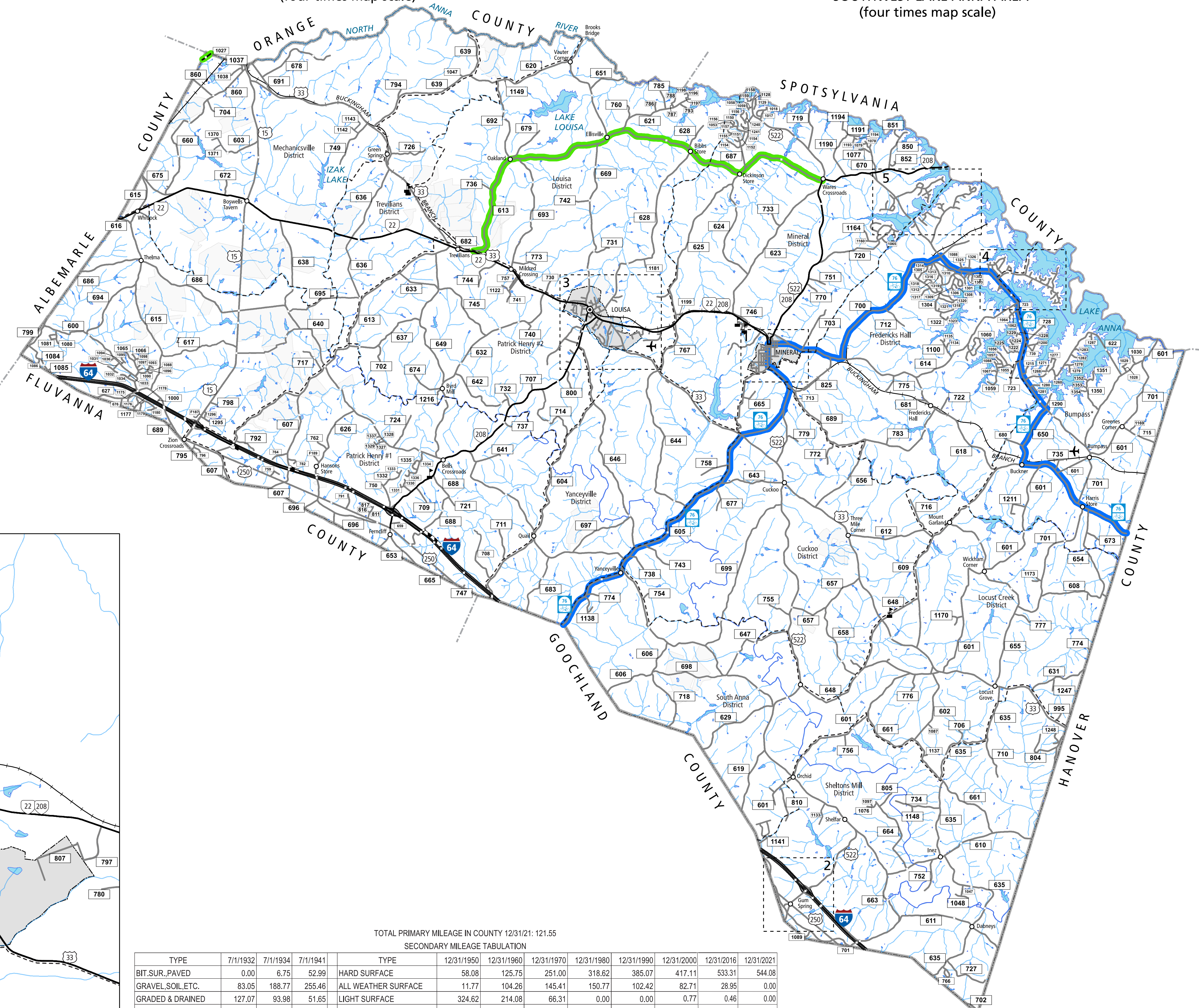
5 SOUTHWEST LAKE ANNA AREA (four times map scale)



2 GUM SPRING AREA (four times map scale)



3 LOUISA AREA (four times map scale)



TOTAL PRIMARY MILEAGE IN COUNTY 12/31/21: 121.55
SECONDARY MILEAGE TABULATION

TYPE	7/1/1932	7/1/1934	7/1/1941	TYPE	12/31/1950	12/31/1960	12/31/1970	12/31/1980	12/31/1990	12/31/2000	12/31/2016	12/31/2021
BIT_SUR_PAVED	0.00	6.75	52.99	HARD SURFACE	58.08	125.75	251.00	318.62	385.07	417.11	533.31	544.08
GRAVEL_SOIL_ETC.	83.05	188.77	255.46	ALL WEATHER SURFACE	11.77	104.26	145.41	150.77	102.42	82.71	28.95	0.00
GRADED & DRAINED	127.07	93.98	51.65	LIGHT SURFACE	324.62	214.08	66.31	0.00	0.00	0.77	0.46	0.00
UNIMPROVED	161.93	91.75	32.20	UNSURFACED	17.27	0.10	1.07	0.54	0.29	0.23	0.00	24.45
TOTAL MILEAGE	372.05	381.25	392.30	TOTAL MILEAGE	411.74	444.16	463.79	469.93	487.78	500.82	562.88	568.53