

US 58 ARTERIAL PRESERVATION PLAN

# Final Corridor Recommendations

## Southampton County

Figure 18. US 58 and Drewry Rd



Figure 26. US 58 at Southampton High School: Option 1



Figure 27. US 58 at Southampton High School: Option 2

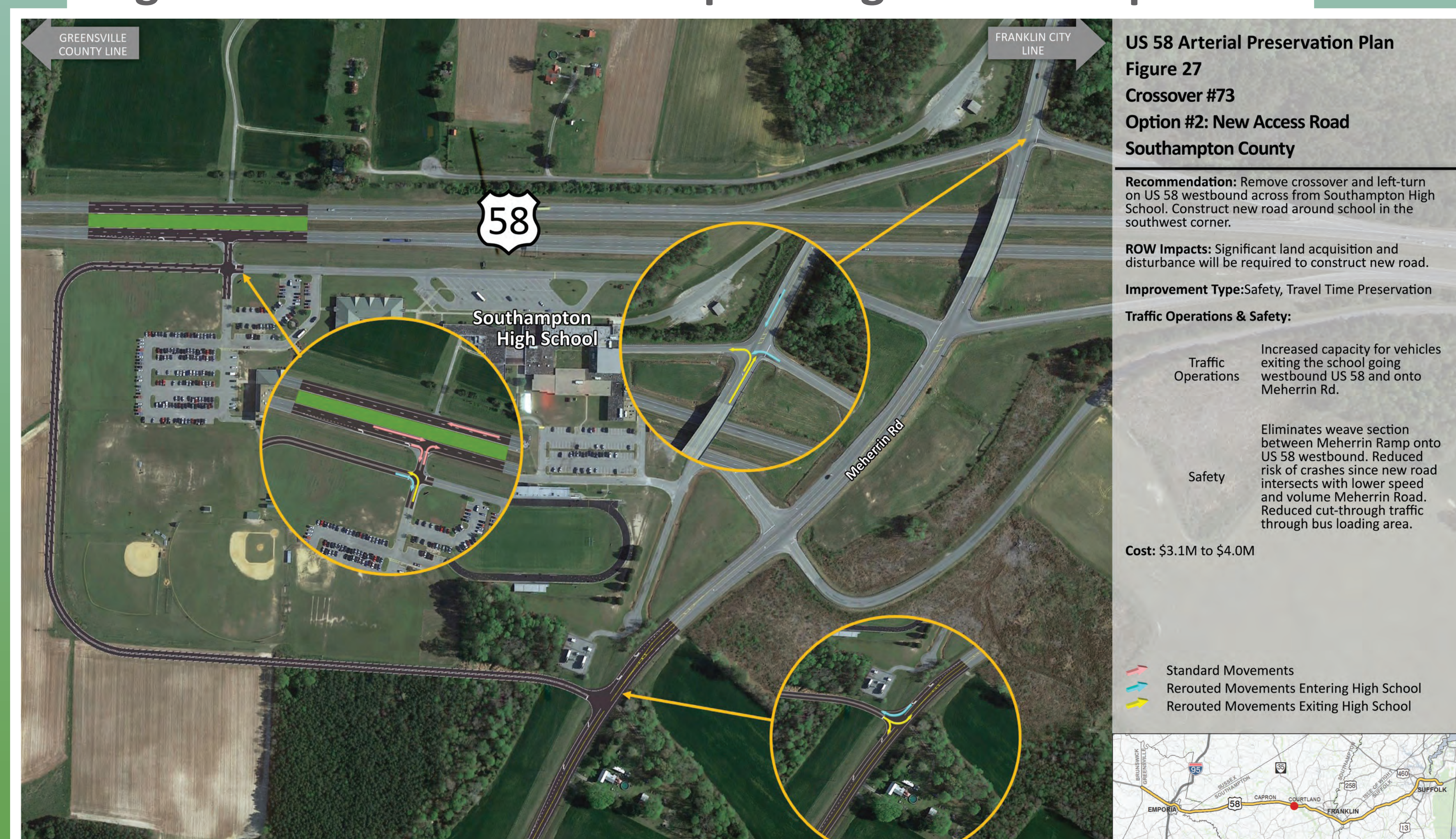


Figure 34. US 58 and Camp Pkwy

