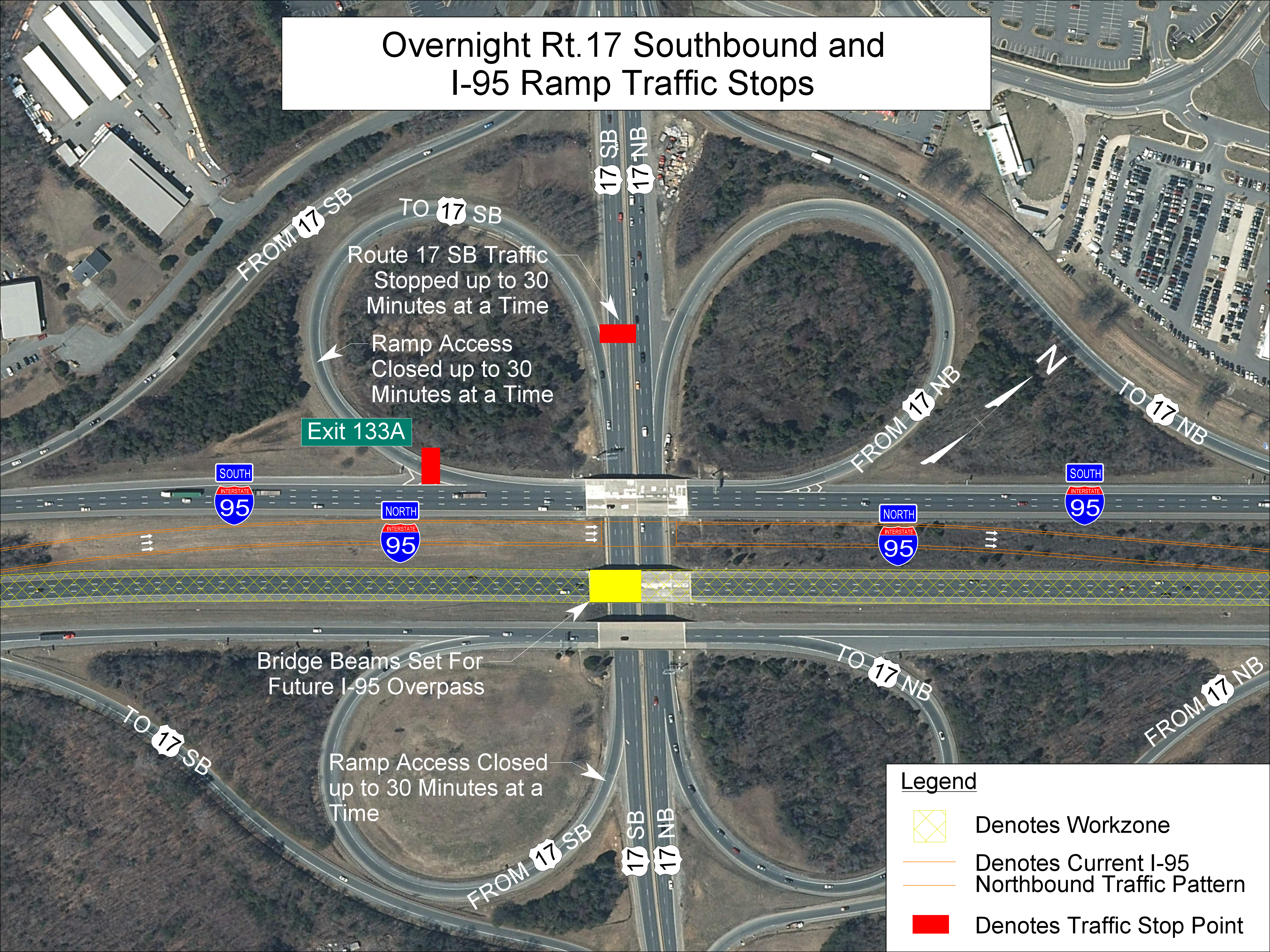


Overnight Rt. 17 Southbound and I-95 Ramp Traffic Stops



Route 17 SB Traffic Stopped up to 30 Minutes at a Time

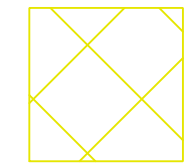


Ramp Access Closed up to 30 Minutes at a Time

Exit 133A

Bridge Beams Set For Future I-95 Overpass

Ramp Access Closed up to 30 Minutes at a Time

Legend

-  Denotes Workzone
-  Denotes Current I-95 Northbound Traffic Pattern
-  Denotes Traffic Stop Point