





# ROUTE 223 OVER MILFORD HAVEN AT GWYNN'S ISLAND BRIDGE MAINTENANCE PROJECT

VDOT Fredericksburg District

April 18, 2022

# Tonight's Agenda

- **Introductions**
- **Construction**
- **Future bridge planning**
- **Questions**
- **Adjourn**



## Presentors

- **Lee McKnight, VDOT Saluda Residency Administrator**
- **Bill Collins, VDOT Construction Manager**
- **Annette Adams, P.E., VDOT Structure and Bridge Engineer, Fredericksburg District**

# Construction Snapshot

**Project mobilizes:** May 2022

**Project complete:** April 5, 2023

**Construction cost:** \$10.7 million total cost; \$8.3 million contract award

**Contractor:** Archer Western Construction, LLC

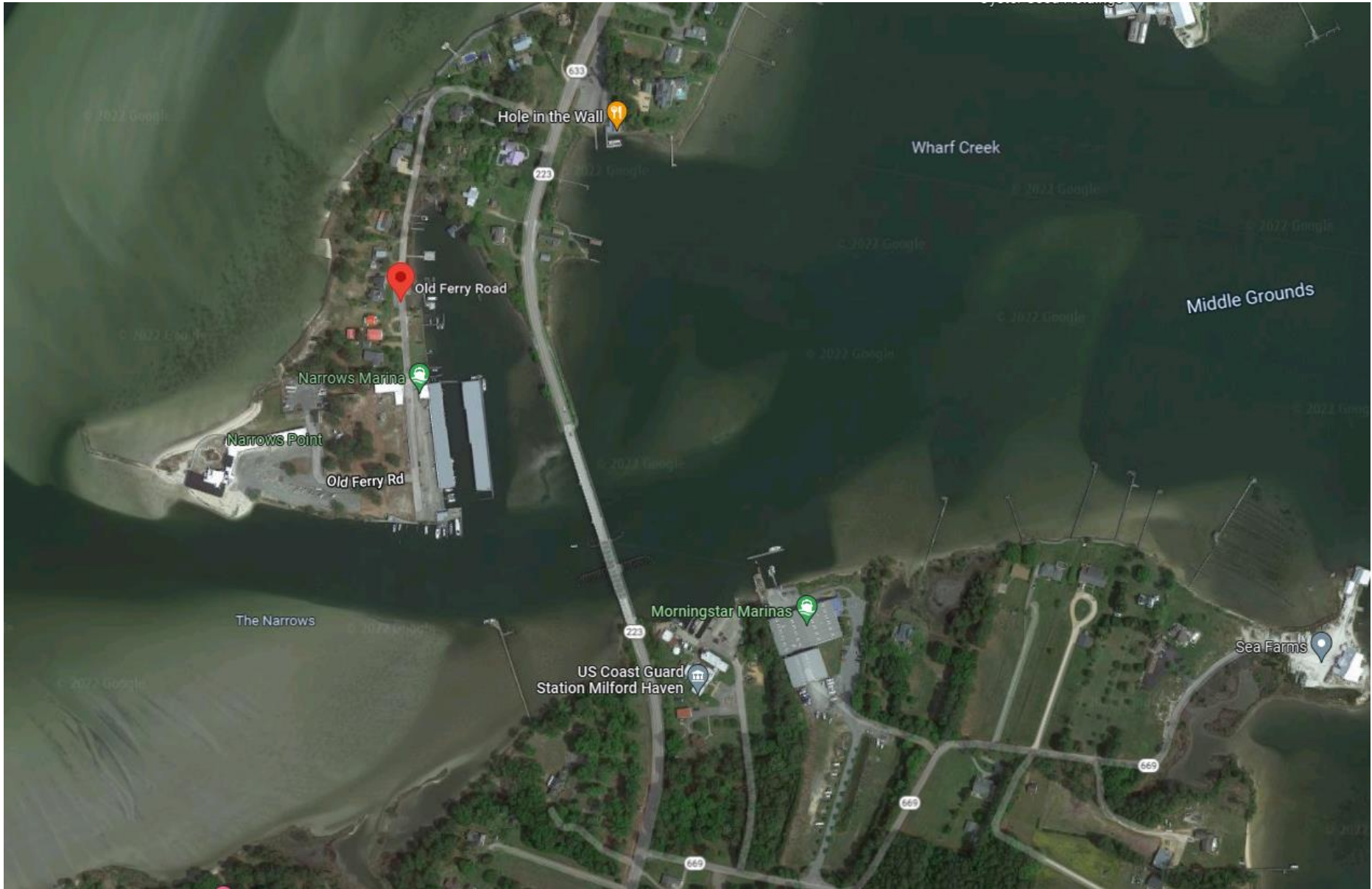


# What will this project accomplish?

- Replaces mechanical and electrical systems
- Spot structural steel repair
- Renovate bridge tender house
- Allow on-demand marine openings to resume at the end of project
- Improves overall bridge condition and sustains connection to island



*Residents have been delayed during days of extreme temperature when expanded steel prevents the bridge's swing span from closing. The Mathews Volunteer Fire Department assisted during this June 2020 incident by pumping water on the bridge to cool the steel.  
Photo credit: Mathews Volunteer Fire Department*



# How will vehicle traffic be affected?



**May – August 2022**

**Periodic single lane closures, with one-way, alternating traffic**

**August 2022 – April 2023**

**Potential temporary traffic signal at each bridge approaching, controlling one-way, alternating traffic 24 hours a day**

**September and October 2022**

**Two overnight bridge closures between 10 p.m. and 6 a.m.**

**Specific dates to be determined and publicized**

**Emergency responders staged on Gwynn's Island**

# How will marine traffic be affected?



## May – mid-August 2022

**Bridge openings continue at six daily scheduled openings:**

- 2 a.m.
- 5 a.m.
- 8 a.m.
- 11 a.m.
- 7 p.m.
- 10 p.m.

## Mid-August 2022 – mid-March 2023

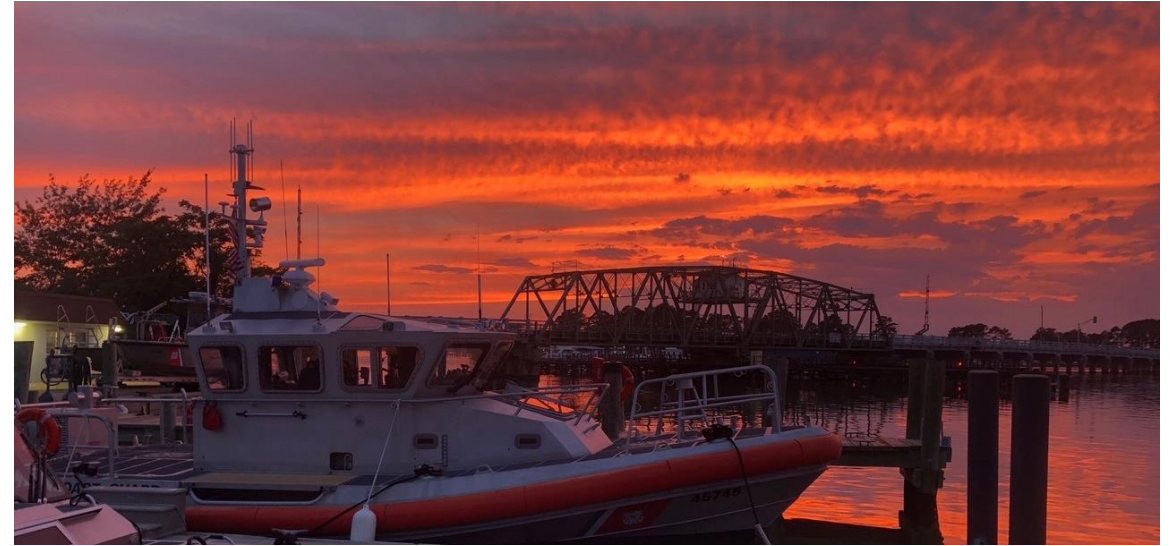
**Bridge placed in closed-to-navigation position**

**Boats that can pass under bridge can continue to do so**



# Future bridge planning

- **Fender rehabilitation design has started with construction estimated to begin after this project is complete**
- **Special Structure Plan – Decade 2032-2041**
  - **Feasibility study for replacement options**
  - **Swing span replacement included as one of the options**



# Thank you!



- Stay updated at [www.virginiadot.org/Route223bridge](http://www.virginiadot.org/Route223bridge)
- Find real-time work zone information and watch the traffic camera at [www.511virginia.org](http://www.511virginia.org)

